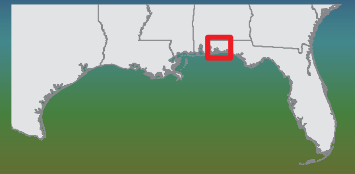




Gulf Coast
Ecosystem
Restoration
Council

Pensacola Bay Watershed

Pensacola Bay Living Shoreline - Phase 1
(FL_RESTORE_001_002_Cat1/Cat2)



Project Name: Pensacola Bay Living Shoreline - Phase 1

Costs: Category 1: \$231,314 | Category 2: \$1,564,636

Responsible Council Member: State of Florida

Project Details: The Pensacola Living Shoreline Phase I project is a multi-phase living shoreline project that includes rock and oyster reef breakwater and 205 acres of emergent marsh and submerged aquatic vegetation (SAV) habitat at three sites.

Activities: The project includes activities in two FPL categories. Category 1 activities provide funding for planning, engineering, design, environmental compliance, and permitting for three sites that includes 24,800 linear feet of rock and oyster reef breakwater and 205 acres of emergent marsh and submerged aquatic vegetation (SAV) habitat. One of the three sites is adjacent to White Island in northwestern Pensacola Bay; and the other two sites are located on the eastern and southern shores of Pensacola Naval Air Station.

Category 2 activities, if funded in the future, would create approximately 2,000 linear feet of an offshore rock and oyster reef breakwater and approximately 25 acres of protected emergent marsh and SAV behind the breakwater at the site adjacent to White Island in Escambia County, Florida.

Environmental Benefits: Living shorelines address further shoreline erosion by providing long-term protection, attenuating wave energy and restoring vegetated shoreline habitats through strategic placement of plants, and rock and oyster reef. If the Category 2 activities are implemented in the future, this project would improve water quality, create new oyster reef habitat, new emergent marsh habitat and new SAV habitat for fish, shrimp, crabs, birds, sea turtles and other estuarine species. The shorelines would be stabilized with vegetation, wave energy would be attenuated by the offshore oyster reef breakwater, and shoreline erosion would be reduced and provide shoreline protection.

Duration: It is anticipated to take 12 months to complete the planning, design, environmental compliance and permitting. If the Category 2 activities are implemented, they would take approximately 12 months to complete.

More information on these activities can be found in Appendix G. Pensacola Bay; Unique Identifier: FL_RESTORE_001_002_Cat1 and FL_RESTORE_001_002_Cat2.

Perdido Bay

Bayou Grande

Bayou Chico

Pensacola Bay



Gulf Coast Ecosystem Restoration Council

Pensacola Bay Watershed

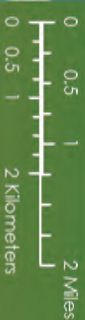
Pensacola Bay Living Shoreline - Phase I

Living Shoreline

Cost: Category 1: \$231,314 | Category 2: \$1,564,636
Sponsor: State of Florida

Project Status: Planning/Implementation
Purpose: Planning - The project will plan, engineer, design, and complete

environmental compliance and permitting for 3 sites. It will consist of 24,800 linear ft of rock and oyster reef breakwater and 205 acres of emergent marsh and submerged aquatic vegetation (SAV) habitat in the Pensacola Watershed. **Implementation** - If funded in the future, the project would create approximately 2,000 linear ft of an offshore rock and oyster reef breakwater and approximately 25 acres of protected emergent marsh and SAV behind the breakwater adjacent to White Sand in Escambia County, Florida.



Gulf of Mexico

Map Date: October 19, 2015